

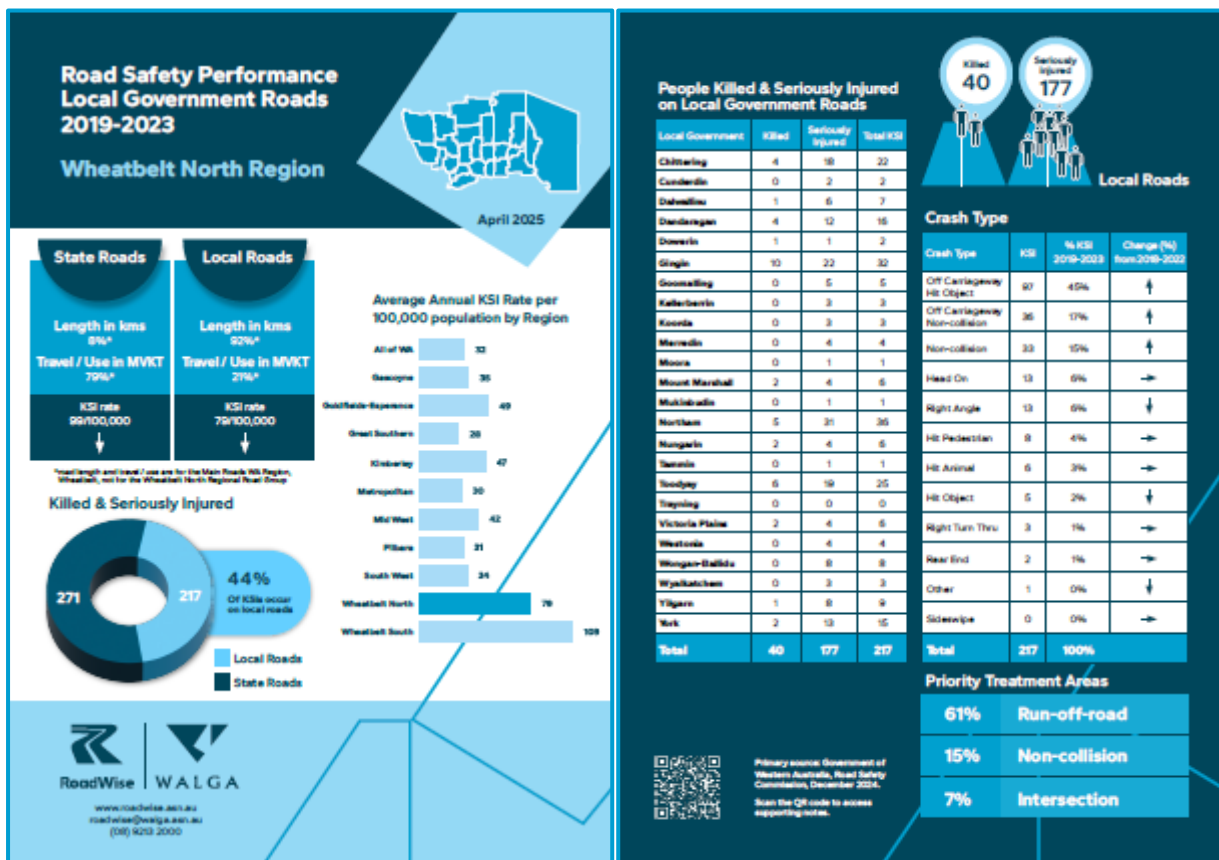
Great Eastern Country Zone Report

August 2025

2019-2023 Local Government Road Safety Performance Reports

WALGA's RoadWise has released the *Road Safety Performance Local Government Roads 2019-2023* reports. The reports are designed to assist Local Governments to:

- measure and monitor changes to road safety performance on their managed road network
- establish road safety targets, and
- identify and prioritise work that will lead to improvements in the network's road safety performance.



Improving Road Safety Performance

Road safety knowledge has been improving over the years, however there is still a need to improve decision making when selecting and applying effective evidence-based road safety interventions. Effective interventions are those that reduce fatal and serious injuries.¹

We know what works; however, current rates of safety improvements are indicating that business as usual will not effectively achieve the goal or targets set in the state and national road safety strategies.

The table below shows the priority crash treatments for the Wheatbelt North region, showing the safe system applied interventions known to protect or alert road users. These interventions are known to be effective in reducing the impacts of these crash types though they need to be applied systematically and not in isolation as they all work together to provide protection to road users and improve crash outcomes.

Understanding the network through a road safety assessment tool, like WALGA's RoadWise LG Stars, will help to identify, plan and establish targets to improve the safety of the network in a proactive and systematic approach. It will also establish possible treatments which, if applied at a network level, that will improve the safety performance of the network.

Priority Treatment Areas

Run-off-road (61%)	Non-collision (15%)	Intersection (7%)
<ul style="list-style-type: none"> • Appropriate speed • Roadside barriers • Line marking • Paved shoulders • Audible lines • Protected roadside hazards • Consistent road design 	<ul style="list-style-type: none"> • Appropriate speed • Roadside and median barriers • Line marking • Audible lines • Wide centre lines • Paved shoulders • Advanced hazard warnings • Consistent design 	<ul style="list-style-type: none"> • Appropriate speed • Provision of safe vulnerable road user facilities • Safe treatments (i.e. roundabouts, protected turning lanes) • Adequate delineation • Suitable sight distances • Adequate lighting and intersection visibility • Predictable road design • Advanced intersection warning

¹ World Bank, Global Road Safety Facility, *Guide for Road Safety Interventions: Evidence of What Works and What Does Not Work*, <https://openknowledge.worldbank.org/server/api/core/bitstreams/d9535c3a-a031-591b-82aa-7bd895f1a3ad/content>.

Australasian Road Safety Conference Perth

The Australasian Road Safety Conference (ARSC) is coming to Perth this year. Being held from the 20-23 October 2025, it will bring together road safety stakeholders and decision-makers from Australian and international jurisdictions to facilitate collaboration and share information.

The conference will host Australasia's leading road safety and injury prevention researchers, practitioners and policy makers. This will be a fantastic opportunity to be emersed in thought provoking discussions, workshops and presentations, connect with peers and meet others working in the road safety space.

Registrations close 19 October, to find out more and register, visit <https://australasianroadsafetyconference.com.au/>.

RoadWise Council Awards

During the WALGA Local Government Awards night, held on the 19 July, 75 RoadWise Councils were recognised with a 2025 Ribbon status. The RoadWise Council Ribbon status reflects how comprehensive or holistic each RoadWise Council's road safety approach has been for the past year. From planning to implementation, and from recording to sharing outcomes, these actions show real commitment to working towards better practice in road safety.

The Awards recognised one RoadWise Council from each of the ten Regional Road Groups who has consistently demonstrated a commitment to planning, implementing, recording and communicating road safety action.

Wheatbelt North Regional Road Group recognition goes to:



Wheatbelt North 2025 RoadWise Council Ribbon Status



Shire of Dowerin also took home the inaugural WA RoadWise Council Award as the RoadWise Council with the largest increase in level of activity recorded across all RoadWise Councils for the year. The Shire can display this trophy until next year's awards when it will be presented to the highest achieving RoadWise Council for the year, according to the 2026 criteria. As we lay the foundations of a long-term program the criteria for the Awards may change as the program matures to ensure commitment and progress can be recognised and rewarded.

RoadWise Council Case Study

Intersection Realignment – Calingiri-New Norcia Rd & Toodyay-Bindi Bindi Rd

Shire of Victoria Plains has recently completed a realignment of the intersection of Calingiri-New Norcia and Toodyay-Bindi Bindi Roads, with the final seal now applied. The Shire worked with ARC Infrastructure, the Public Transport Trust and Yued Aboriginal Corporation over many years to deliver the project, which included obtaining clearing permits, land acquisition and overcoming rail infrastructure issues. In addition, as part of their vegetation clearing, the Shire is finalising a vegetation offset on Crown Reserve on Old Plains Road.

The final stage of connecting to the New Norcia Rd occurred in January 2025, while the Toodyay-Bindi Bindi Road project was being completed, to minimise the time between traffic management and seal works for both projects. ARC Infrastructure installed a new rail crossing, draining works are complete and the pavement has been widened to 10m with an 8m seal. Line marking is coming soon.

The main issue being addressed in this project was the inadequate approach 'stacking' distance from the rail line out to Toodyay-Bindi Bindi Rd. Initially, only one truck and trailer could safely stop at the rail crossing without impacting passing traffic on Toodyay-Bindi Bindi Rd. Not only has the stacking distance increased, access to CBH has been improved with upgraded entrances from New Norcia Road, a welcome improvement for all road users.

The Shire promoted the completion of the project to the community by sharing drone footage on their social media. See [Shire of Victoria Plains Facebook](#) for drone footage of the finished project.

See below for 'before and after' photographs of the project.



Learning and Development

IPWEA Road Safety Audit

Main Roads WA and Institute of Public Works Engineering Australasia (IPWEA) WA Division, Road Safety Audit Panel has developed a competency assessed Road Safety Audit training course that must be successfully completed to be eligible to apply for accreditation as a Road Safety Auditor in Western Australia.

The Road Safety Audit course modules have also been developed to allow students who may not wish to complete the whole Road Safety Audit course but are interested in learning about any of the wide variety of subjects covered in the course, to complete any of the 23 individual modules listed.

The course comprises the following elements:

- [twenty-three online competency assessed modules](#), and
- a competency assessed Practical application module which involves taking part in an assessed road safety audit.

Road Safety Engineering

Main Roads WA and IPWEA WA Division, Road Safety Audit Panel has developed a competency assessed Road Safety Engineering – Treatment of Crash Locations training course that is a vital training resource for individuals involved in the treatment of crash locations. This training must be successfully completed to be eligible to apply for accreditation as a Road Safety Auditor in WA.

The course comprises [10 online competency assessed modules](#).

Contact

For more information or any queries please contact:

Tracey Peacock
Road Safety Advisor
WALGA RoadWise

Northam Visitor Centre,
2 Grey Street
Northam WA 6407

T: 0477 272 466 | tpeacock@walga.asn.au

